



i-connect



i-LiNQ[®]

The NEW biO₂logic Component
between Implant and Abutment

i-connect. The Screw Retained Connection.

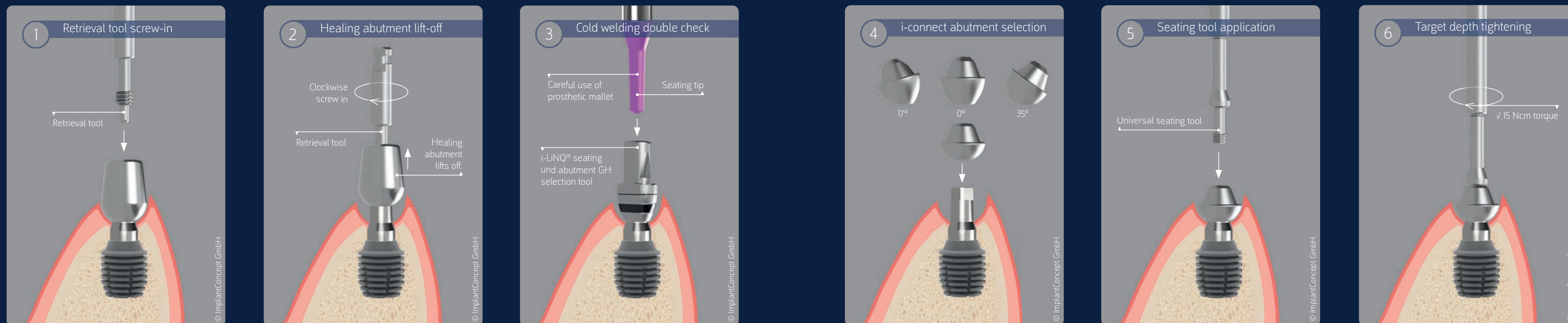
i-connect serves for screw retained prosthetic restorations by splinted crowns, bridges and bars. i-connect is fully compatible to well-known MultiUnit geometry. Therefore all common CAD-CAM manufacturing processes for digital framework design and construction can be used.

During impression procedure it has to be kept in mind, that a precise transfer from the intraoral situation to the lab model has to be guaranteed. Otherwise overload of prosthetic screws will result and will compromise both, the prosthetics and the osseointegration of the implants. In order to avoid any issues we strongly recommend the 2step impression technique:

In the first first step a simple closed tray impression should be taken by „screw-on“ or „snap-on“ impression posts. On a first plaster model the „pick-up“ impression posts should be splinted by any resin material and sectioned into single parts.

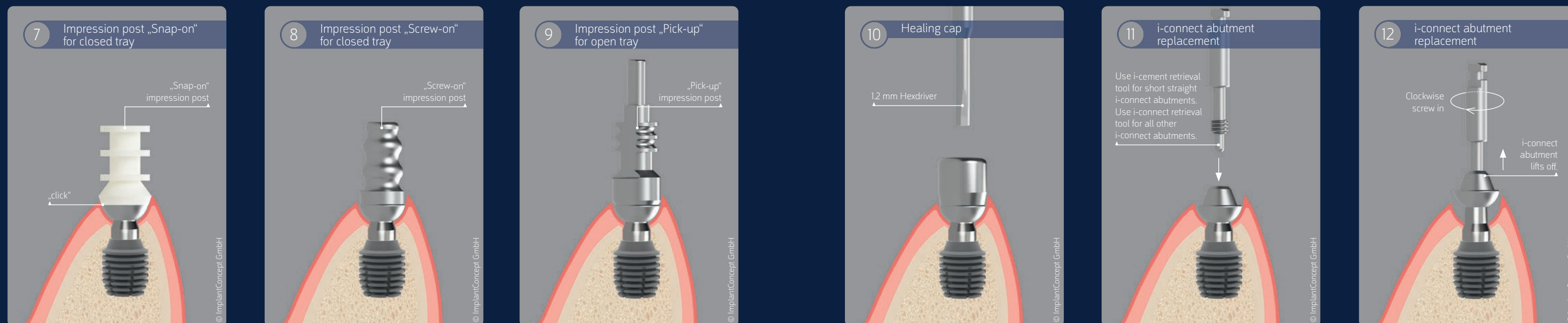
In the second step the resin embedded „pick-up“ impression posts should be installed on the i-connect abutments and the small gaps between the single segments must be filled with a liquid resin material for re-splinting the segments intraorally. Taking impression can now be completed by using an open tray.

i-connect abutments are available in 0°, 17° and 35° angulation. Straight versions are offered in gingival height short [**S**], regular [**R**] and long [**L**], all non-indexed. Angled versions are offered in regular [**R**] and long [**L**], indexed and non-indexed.

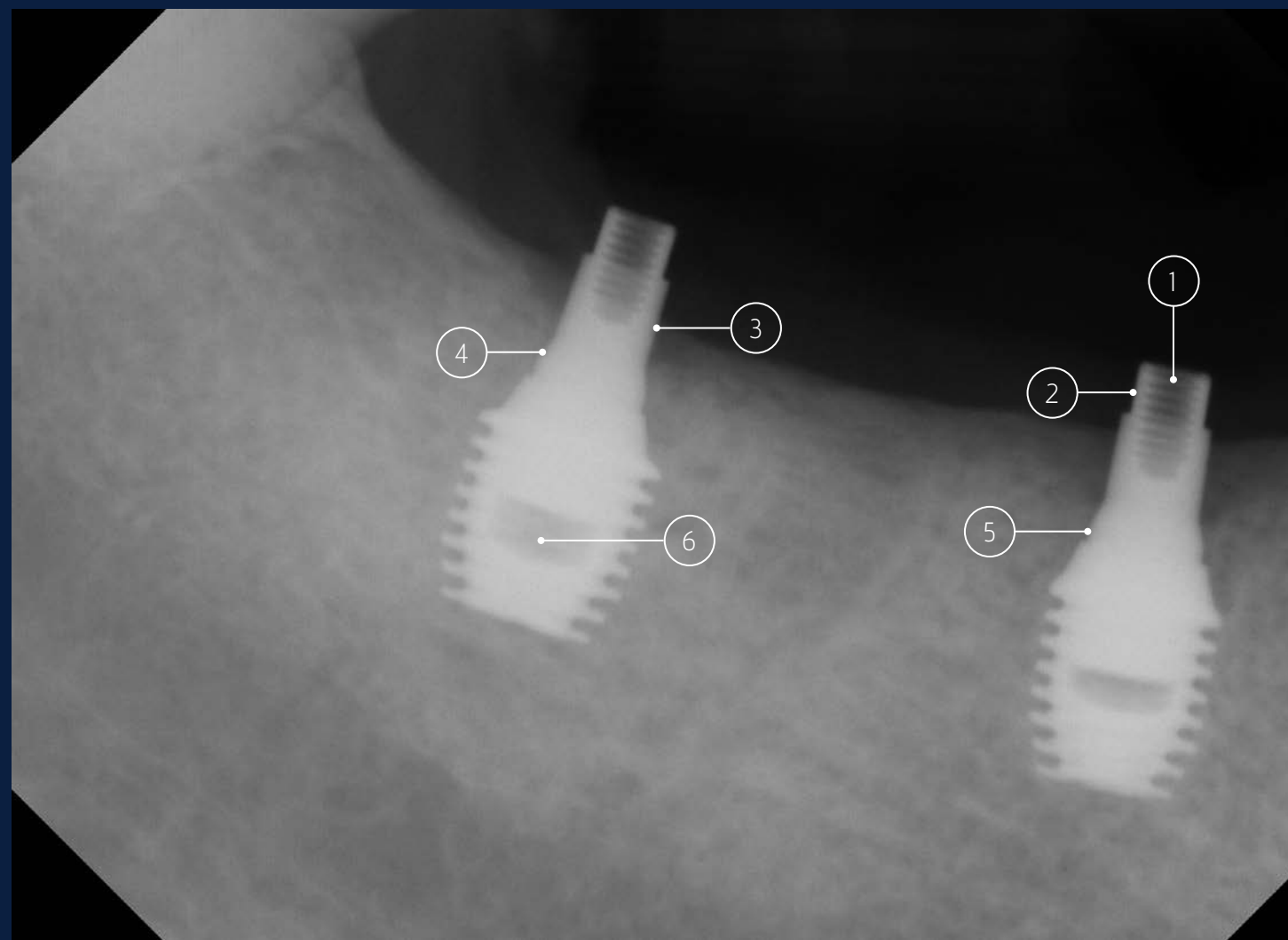


Clinical Protocol: i-connect

Clinical Protocol: i-connect



- ① M 1.4 internal threads
- ② Index
- ③ Conical connection i-LiNQ[®] to abutment
- ④ Offset area and extension length
- ⑤ Conical connection i-LiNQ[®] to implant
- ⑥ Free space



① i-connect Abutment short / regular / long

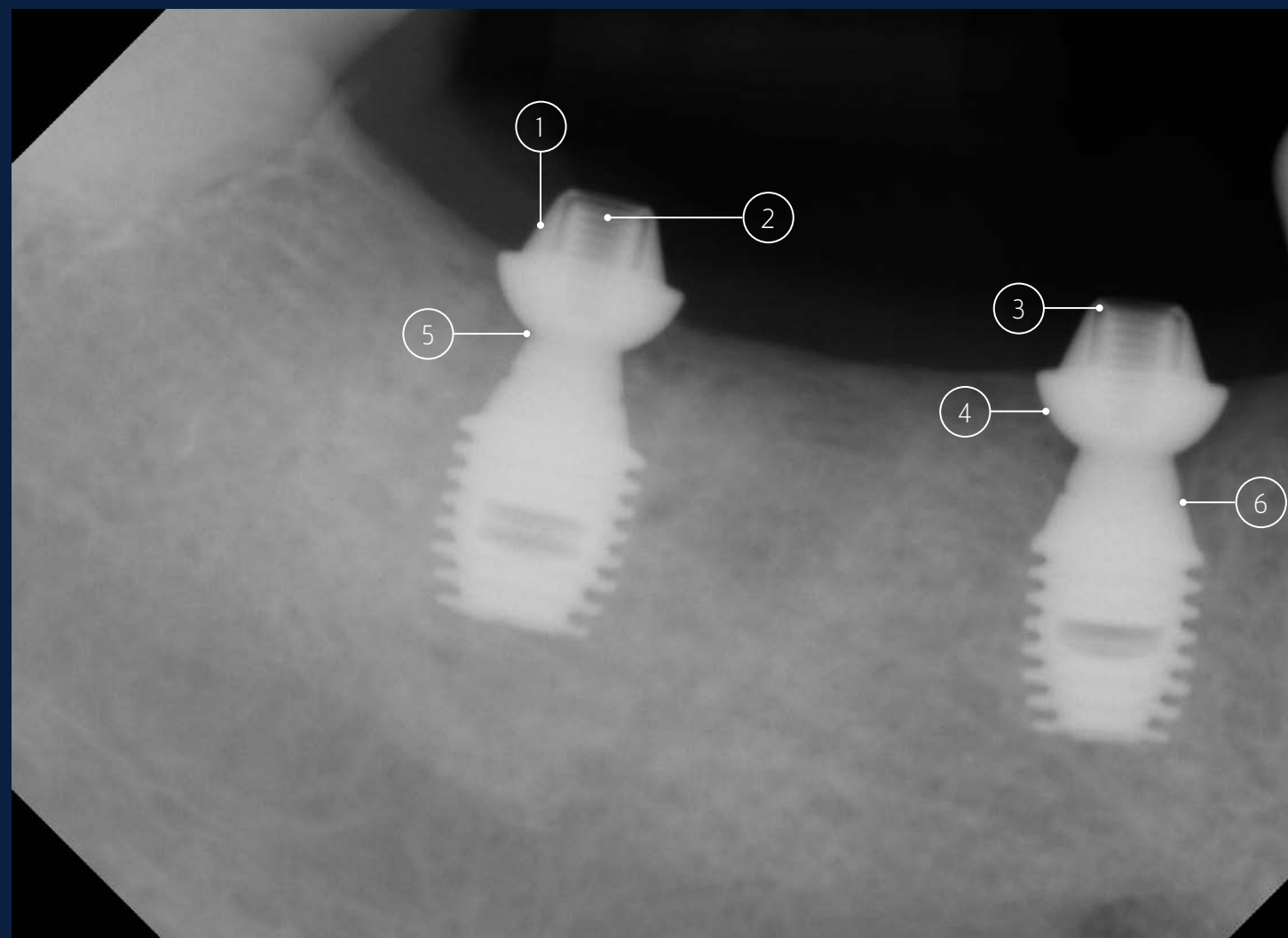
② M 1.4 threads for prosthetic screw

③ Defined horizontal stop



④ Elliptosphere

⑤ Cold welding i-LiNQ[®] – Abutment

⑥ Cold welding i-LiNQ[®] – Implantat




i-connect.

<div><div>i-connect 0°</div><div><div>GH</div></div></div>	<div><div>Ø</div><div>4.8</div></div>	<div>0°</div>	<div><div>non indexed</div><div><div>GH</div><div>I-SILCO S/R/L</div></div></div>	
<div><div>i-connect 17°</div><div><div>GH</div></div></div>	<div><div>Ø</div><div>4.8</div></div>	<div>17°</div>	<div><div>non indexed</div><div><div>GH</div><div>I-SILCON R/L-17</div></div></div>	<div><div>indexed</div><div><div>GH</div><div>I-SILCO R/L-17</div></div></div>
<div><div>i-connect 35°</div><div><div>GH</div></div></div>	<div><div>Ø</div><div>4.8</div></div>	<div>35°</div>	<div><div>non indexed</div><div><div>GH</div><div>I-SILCON R/L-35</div></div></div>	<div><div>indexed</div><div><div>GH</div><div>I-SILCO R/L-35</div></div></div>

i-connect


ACCESSORIES

Healing Cap




I-SILCOHC

Impression cap „snap-on“




I-SILCOPIC

Impression cap „screw-on“




I-SILCOIP-1

Impression cap „pick-up“




I-SILCOIP-2

Universal Seating Tool



I-SILUST

Removal Tool




I-SILCORTS
I-SILCORTL

i-connect


ACCESSORIES

Model Analog




I-SILCOA

Protection Cap




I-SILCOPRCap

Prov. Cylinder Titanium




I-SILCOPCyN

Prov. Cylinder PEEK




I-SILCOPSlv

Welding Cap Ti IV



I-SILCOWClyn

Prosthetic Screw M 1.4



I-SILCOSCR



Editor: Novodent SA
legally represented by general manager Bernard Jahrmann
Avenue des Sciences II, Y-Parc Technopole
CH-1400 Yverdon-les-Bains (Switzerland)
Phone: +41 24 524 28 28
email: info@isystemimplant.com
Registered with the commercial register of Vaud under
CHE-287.655.434

Text: Dr. Stefan König, M.Sc. M.Sc.
Design: Dr. Stefan König, M.Sc. M.Sc.
3-D-Rendering: Assoc. Prof. Nejat Nizam
Graphics: Dr. Stefan König, M.Sc. M.Sc.
Images: © Dr. Stefan König, M.Sc. M.Sc.

Published: 2021

Tous droits réservés.

La reproduction, également l'extrait et la reproduction de photos, n'est autorisée qu'avec l'autorisation écrite de ImplantConcept GmbH, Bochum/Allemagne.
Toutes les offres, commandes et livraisons sont soumises aux conditions générales de vente et de livraison, disponibles sur www.implant-concept.de.
Nous nous réservons le droit de modifier notre gamme de produits et leur design ainsi que de dévier des illustrations et données y figurant.

All rights reserved.

Reproduction, also by extract and reproducing photos, are only permitted by written authorisation of ImplantConcept GmbH, Bochum/Germany.
All offers, orders, and deliveries are subject to „General Sales and Delivery Terms“, available on www.implant-concept.de.
We reserve the right to modify our range of products and their design as well as to deviate from the illustrations and data shown.

© 2021 – ImplantConcept GmbH





NOVODENT

Avenue des Sciences 11 • Y-Parc Technopole
CH-1400 Yverdon-les Bains (Switzerland)

Phone: +41 24 524 28 28

ilingimplant.com